



Grosvenor Waterside, Chelsea
London SW1W

GARTON JONES.COM



Grosvenor Waterside, Chelsea London, SW1W

GARTON JONES.COM

8 Gatliff Road
Chelsea
London
SW1W 8DP

Sales +44 (0) 20 7730 5007
gws@gartonjones.com
www.gartonjones.com

£2,500 Per Week

SHORT LET: A bright and spacious 3 double bedroom penthouse apartment for SHORT LET of approx.1324sq.ft (123sq.m) in Hirst Court, Grosvenor Waterside, a popular residential development surrounding the former Grosvenor dock by Chelsea Bridge. The apartment has an open plan reception/dining room with full width floor to ceiling windows. Additional to the bedrooms there is a cot/dressing/study area. There is a smart kitchen with a breakfast bar and Miele integrated appliances, 3 luxury bathrooms (2 en-suite shower rooms) plus guest cloakroom, comfort cooling, wood flooring, underground parking, good storage including a utility cupboard housing a washing machine and washer dryer, a large range of fitted wardrobes to the master bedroom and also fitted wardrobes in bedrooms 2 and 3. The development provides residents with a 24 hour concierge service and there is a leisure suite with a well-equipped gym with spa facilities. On-site you also have a Sainsbury's convenience store, a coffee shop and bakery, a Bright Horizon's children's nursery and a Purple Dragon private kids club. You will also be within very easy reach of Sloane Square which is within walking distance and the excellent transport links of Victoria including the Gatwick Express service are close by.

Please note the furniture may differ or not be included to that shown in current photos.

Available furnished or unfurnished

Rental price includes bills.

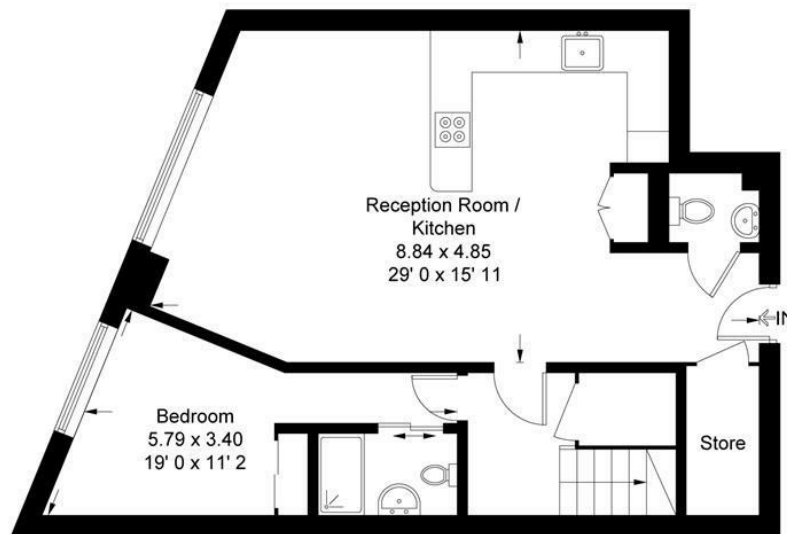
EPC certificate available on request.

- 1324sq.ft (123sq.m)
- Penthouse Apartment
- 3 Double Bedrooms
- 3 Bathrooms (En-suite)
- Guest Cloakroom
- Open Plan Living Room
- Modern Kitchen with Miele Integrated Appliances
- Residents Gym with Spa Facilities & Secure Underground Parking
- On-Site Sainsburys, Coffee Shop & Bakery, Creche & Purple Dragon Private Kids Club
- Walking Distance to Sloane Square & Victoria mainline station.

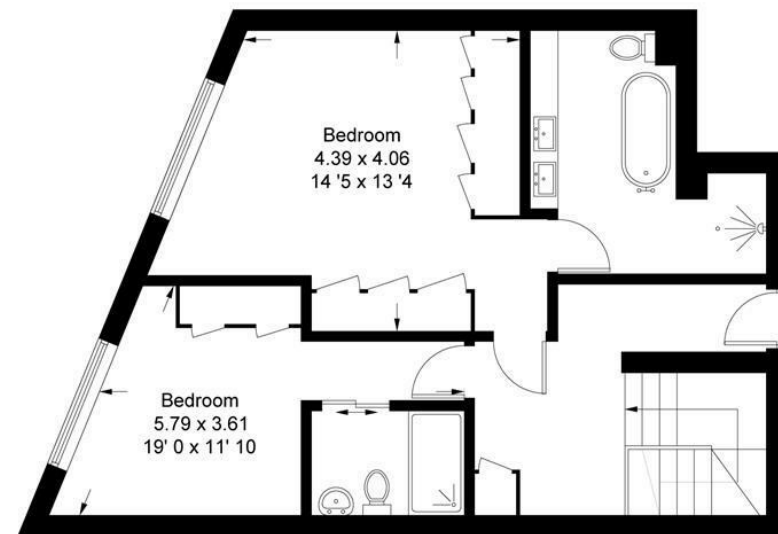


Hirst Court

Approximate Gross Internal Area = 1324 sq ft / 123 sq m



662 sq ft / 61.5 sq m



662 sq ft / 61.5 sq m

Not to scale, for guidance only and must not be relied upon as a statement of fact
All measurements and areas are approximate only and have been prepared in
accordance with the current edition of the RICS Code of Measuring Practice

